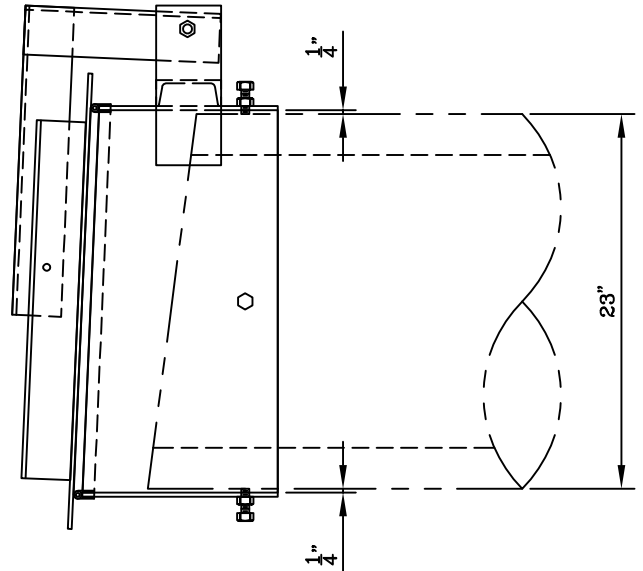


FRONT ELEVATION



SIDE ELEVATION

NOTES:

1. GATE FABRICATED FROM  $\frac{1}{4}$ " M.S. MATERIAL.
2. "J" BULB NEOPRENE ADJUSTABLE SEAT PROVIDES EXCELLENT SEALING AGAINST RETURN FLOW.
3. SIZES 12" TO 72" AVAILABLE.

STATE APPROVED — ASPHALT DIPPED

24"  $\phi$  BODY — FOR USE ON 23"  $\phi$  O.D. CONCRETE PIPE

FLAP GATE — SPIGOTBACK

MODEL: GSB-FG-24

DATE: 11/19/2020

SCALE: NONE

DWG #

**FG**

**Gibson Steel Basins, Inc.**

1040 Arrowsmith St. Eugene Or. 97402  
(541) 484-7200 or (800) 574-8096

Visit us at: [www.gibsonsteelbasins.com](http://www.gibsonsteelbasins.com)

Email us at: [sales@gibsonsteelbasins.com](mailto:sales@gibsonsteelbasins.com)

EST. 1996

CCB 150089